



12-level
Wind resistance



9-level
earthquake resistance



50 years
life span




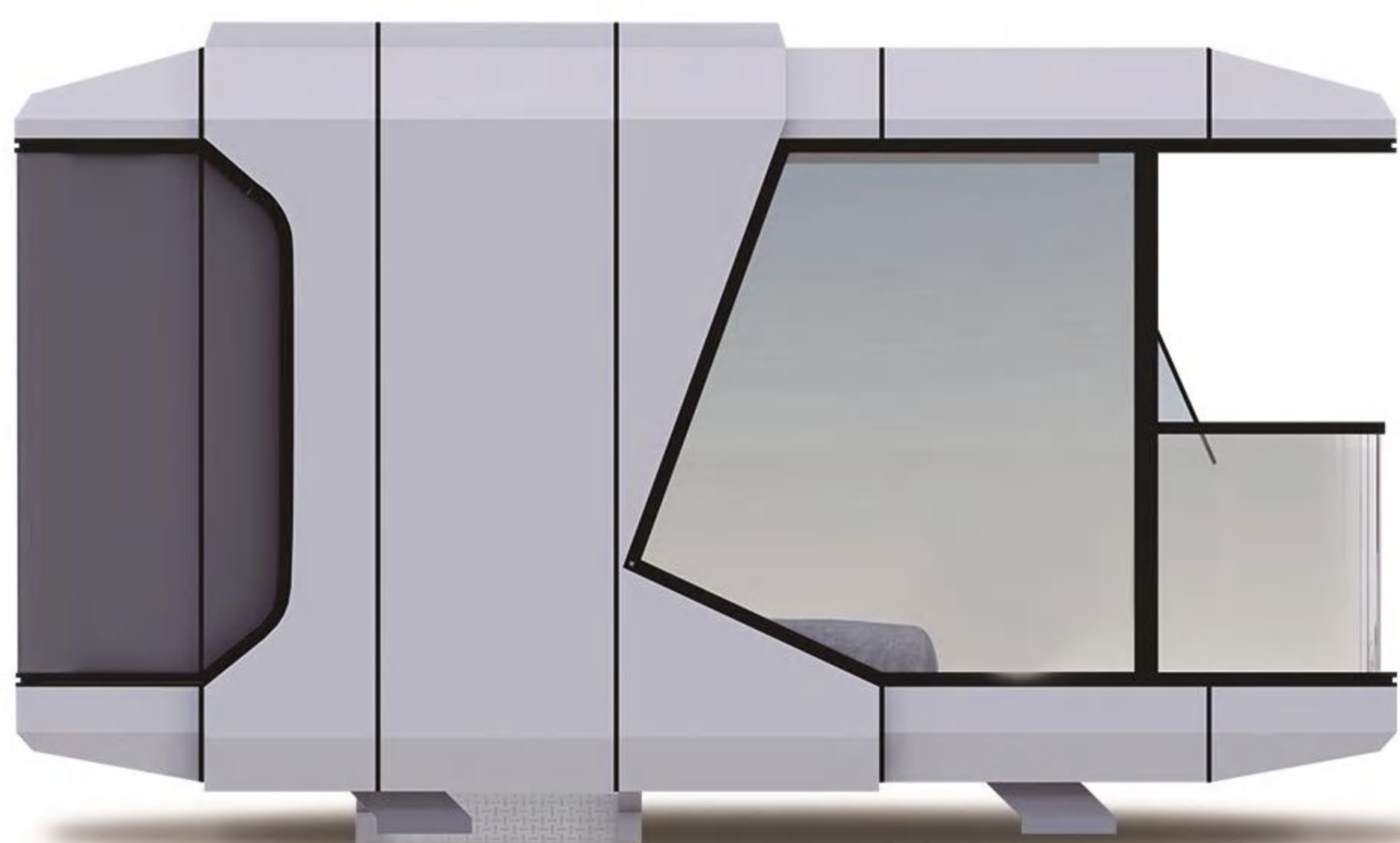


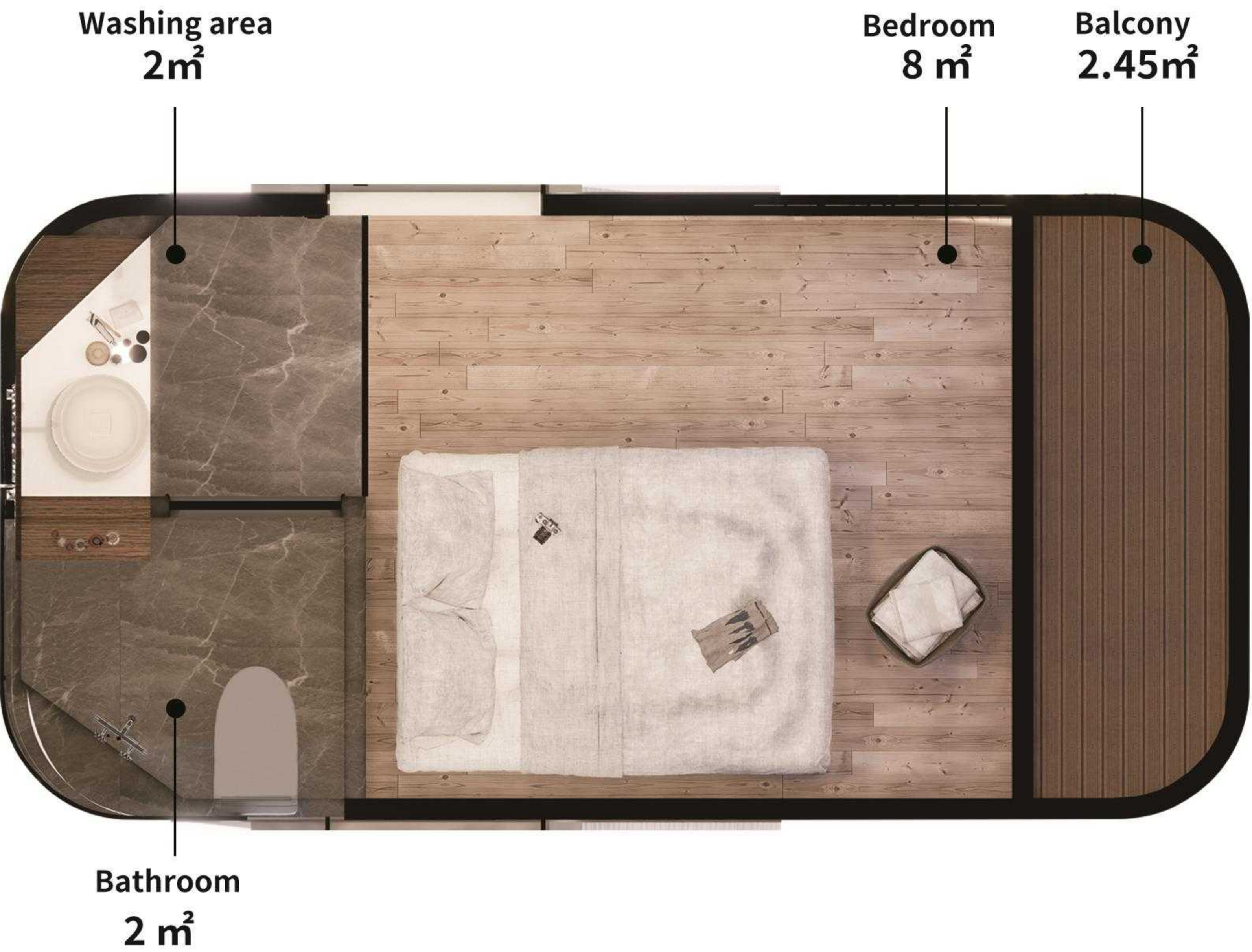
Shandong SUNINN Intelligent Technology Co., Ltd. is a new type of cultural and tourism industry and comprehensive service provider for light life, integrating the design and creation of light life application scenarios, comprehensive cultural and tourism development, and independent design, production, and sales of mobile cabins.

The company takes "light life, slow pace" as its core concept, faces the domestic and foreign mid to high end cultural and tourism markets, keeps up with the pace of development in the new era, combines the great strategy of "rural revitalization", "common prosperity", "green mountains and clear waters are gold and silver", and "vigorously develops the cultural and tourism industry", independently designs, researches, produces, and sells different series of new intelligent mobile cabins, is committed to creating a high-end prefabricated building system, promoting intelligent mobile cabin products to scenic areas, hotels, homestays, public services and other multi scenario application fields, and strives to provide customers with more comprehensive and high-quality product services. It is determined to create a new model of "cultural tourism+prefabricated" and become a leader in the new era of light life experience space.

PRODUCT OVERVIEW

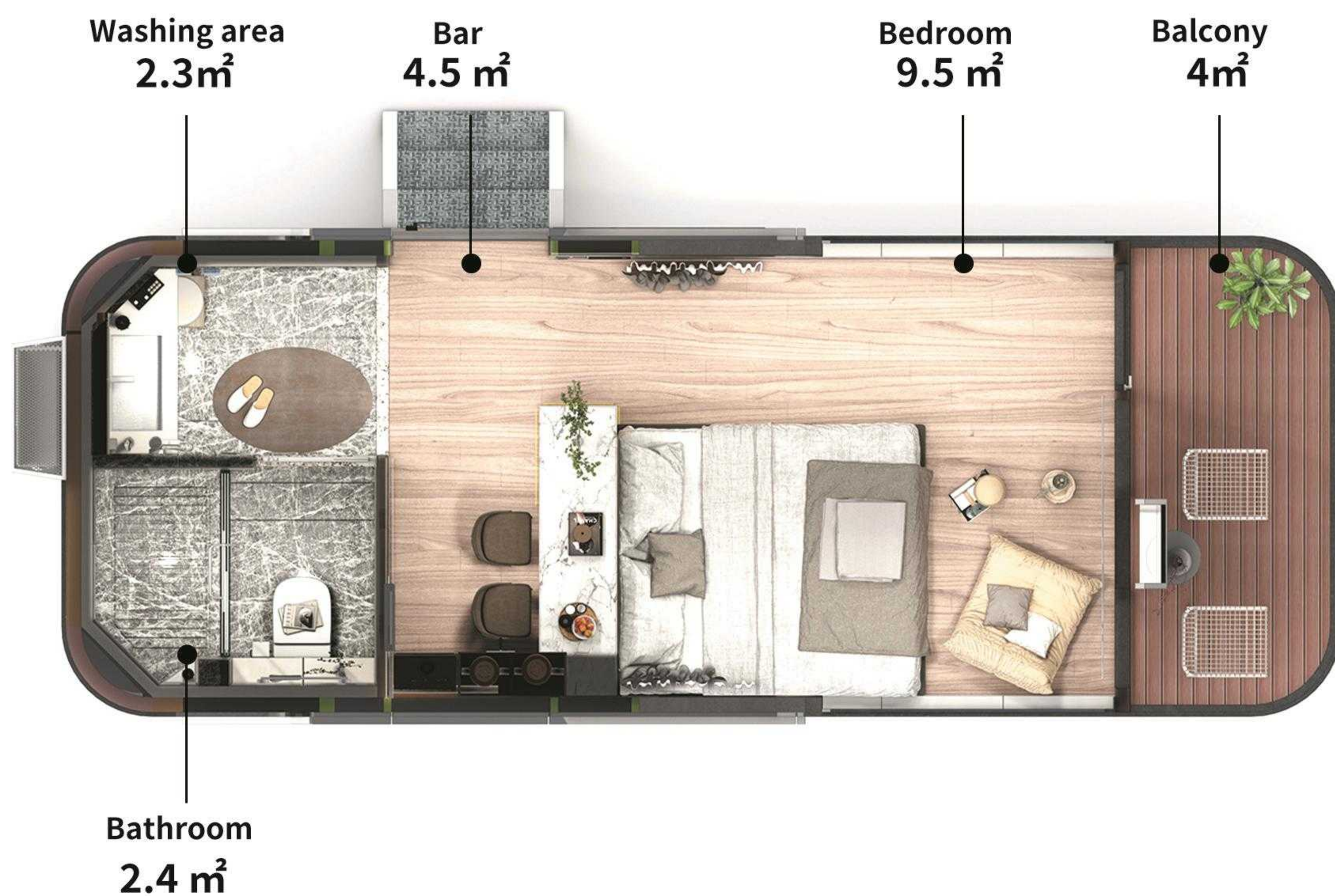
V3		V5	
V7		BOX-10	
BOX-07		BOX-03	
BOX-02		BOX-01	
T3		T6	



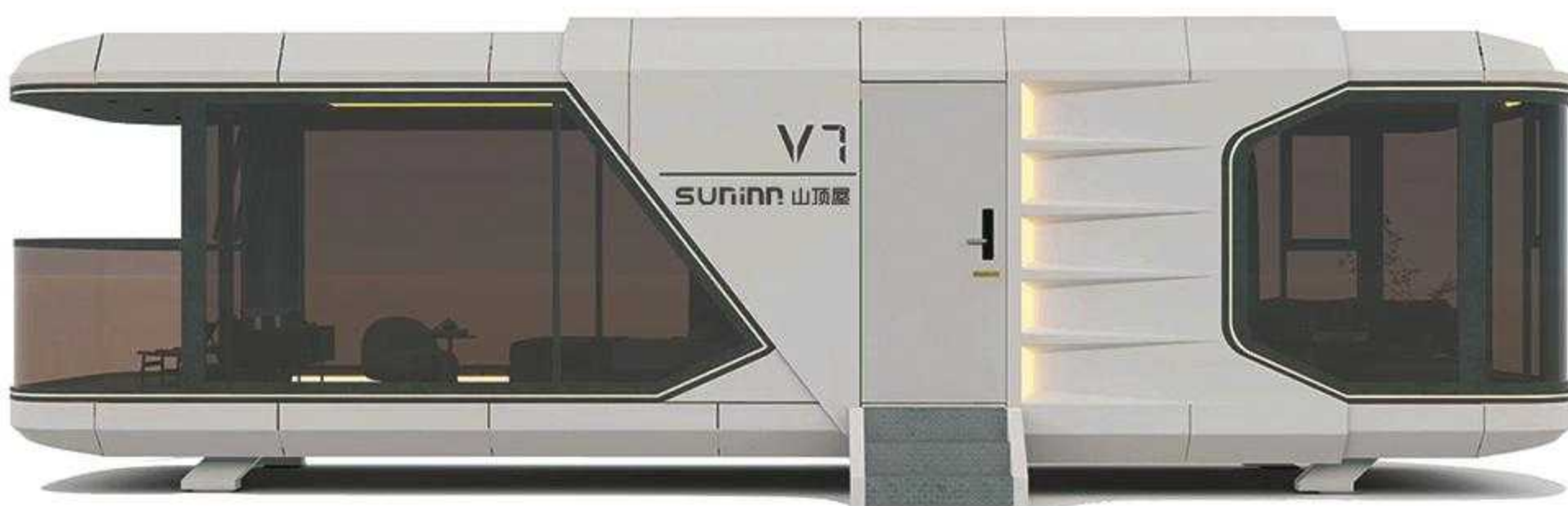


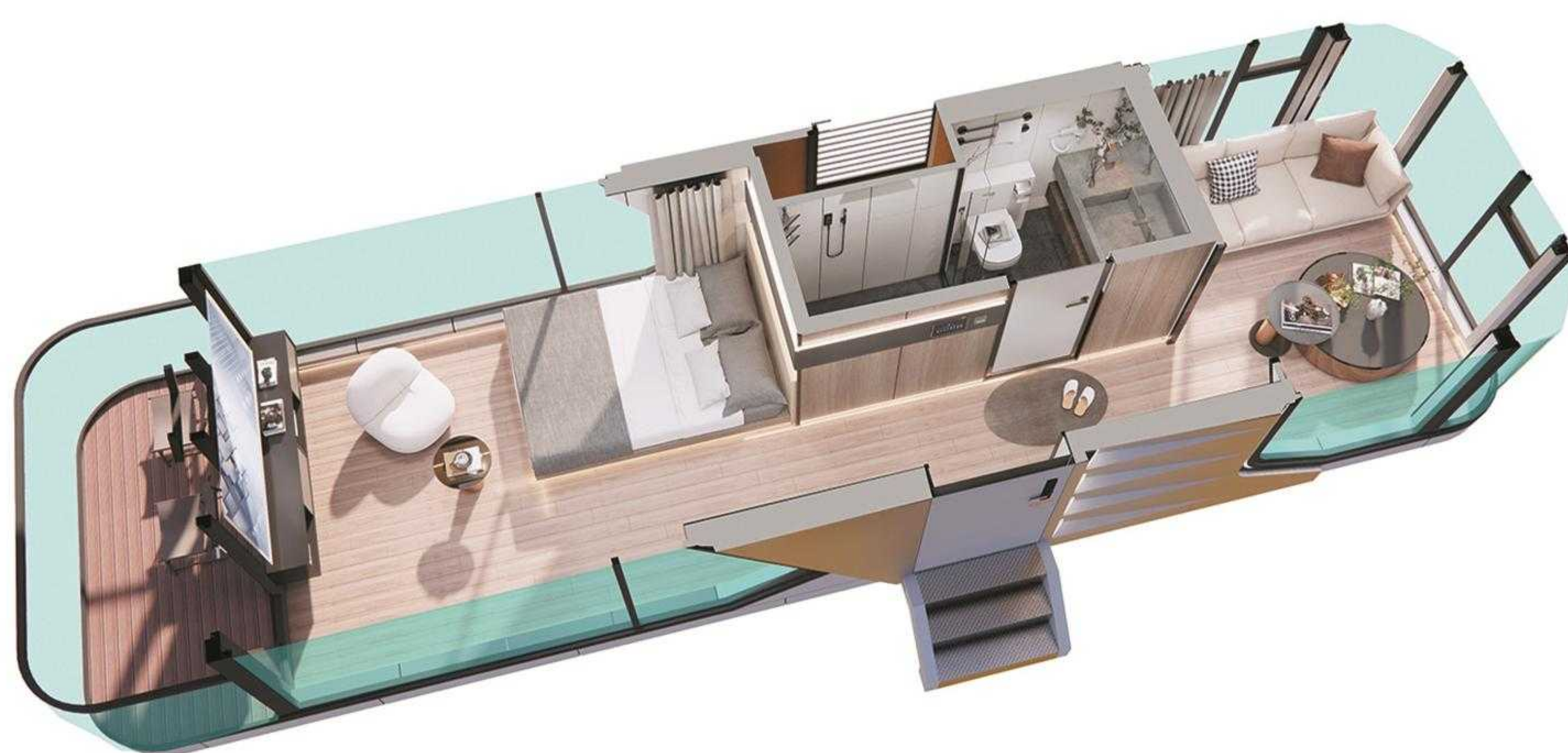
- Double layer tempered insulated LOW-E glass
- Fluorocarbon painted aluminum panel exterior wall
- Waterproof mortar backfilling and reinforcement
- Reinforced solid wood Laminate Flooring
- Wet dry separation bathroom
- With brand electrical facilities





- Double layer tempered insulated LOW-E glass
- Fluorocarbon painted aluminum panel exterior wall
- Waterproof mortar backfilling and reinforcement
- Reinforced solid wood Laminate Flooring
- Wet dry separation bathroom
- With brand electrical facilities



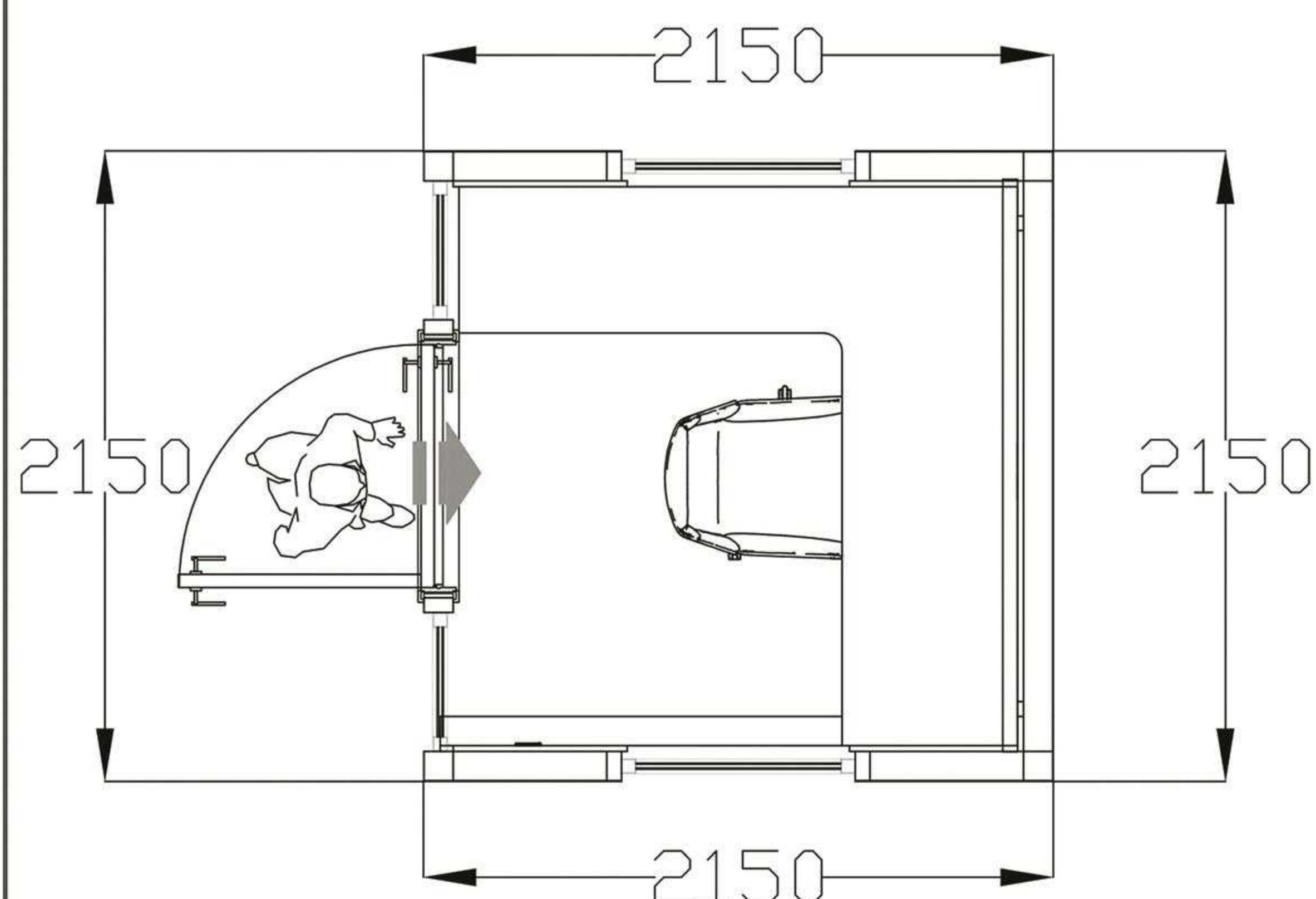


- Double layer tempered insulated LOW-E glass
- Fluorocarbon painted aluminum panel exterior wall
- Waterproof mortar backfilling and reinforcement
- Reinforced solid wood Laminate Flooring
- Wet dry separation bathroom
- With brand electrical facilities



BOX01



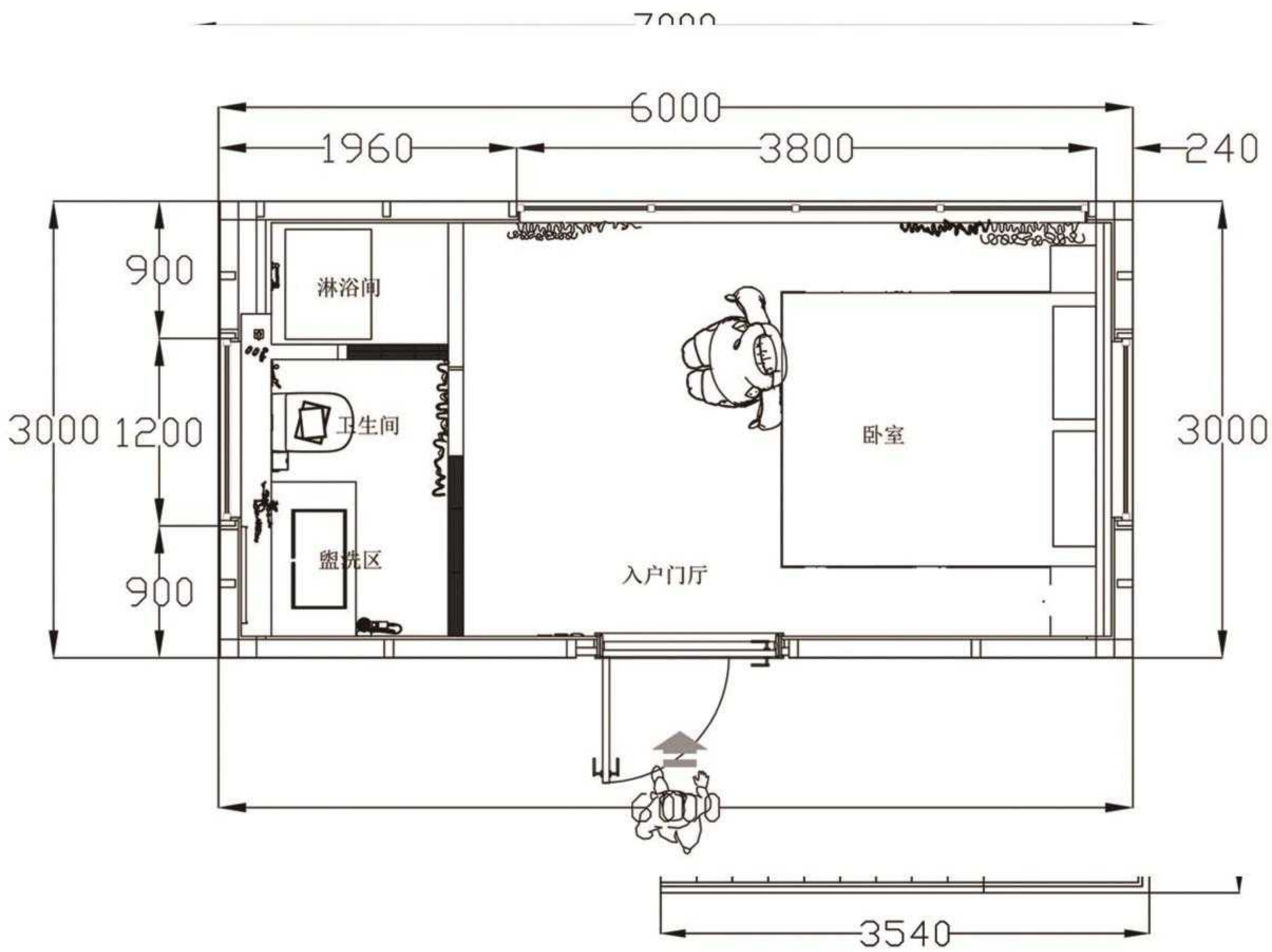


Total construction area: 4.6m²
Size: 2.15m*2.15m*2.3m



- Double layer tempered insulated LOW-E glass
- Fluorocarbon painted aluminum panel exterior wall
- Waterproof mortar backfilling and reinforcement
- Reinforced solid wood Laminate Flooring



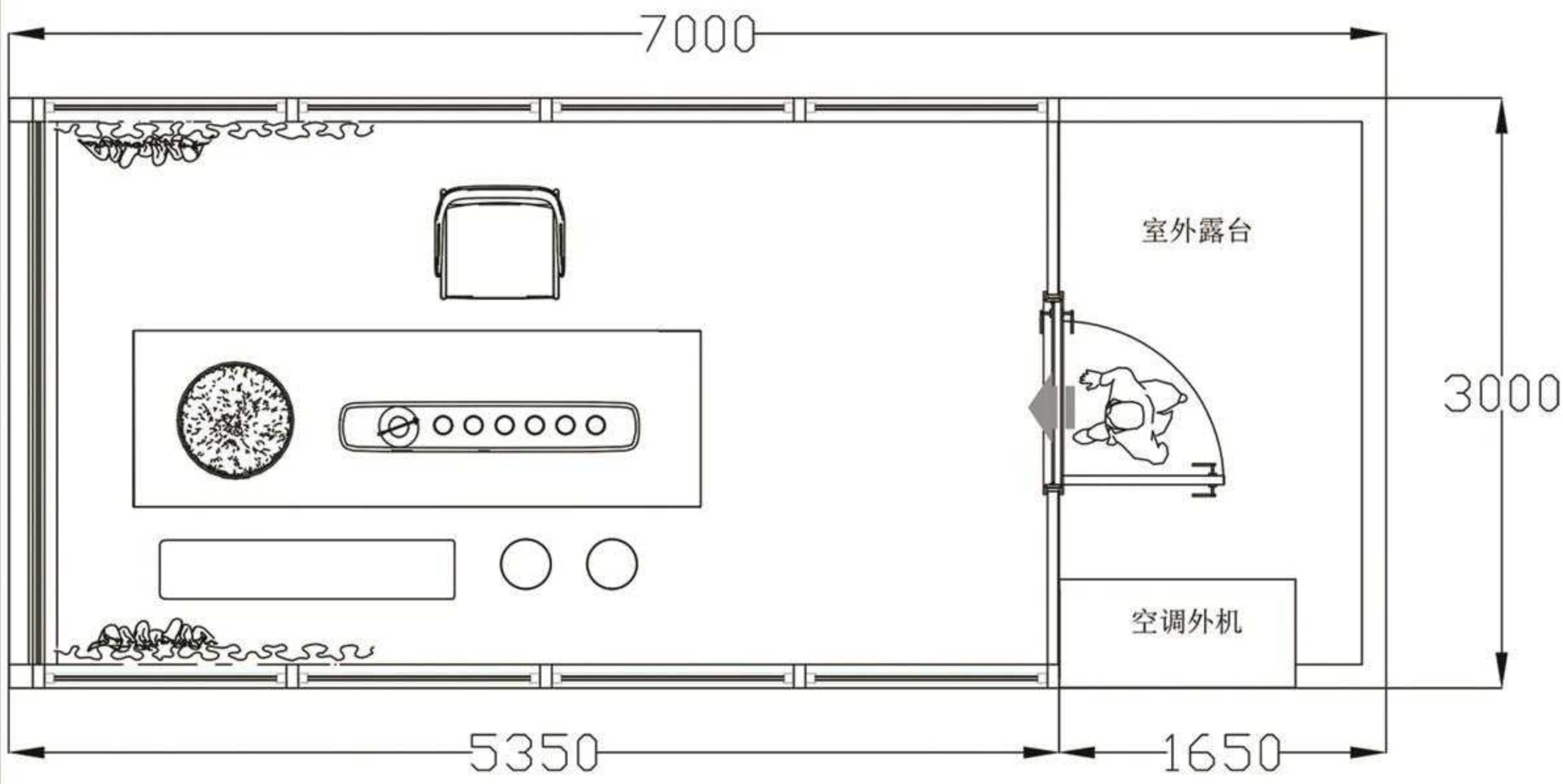
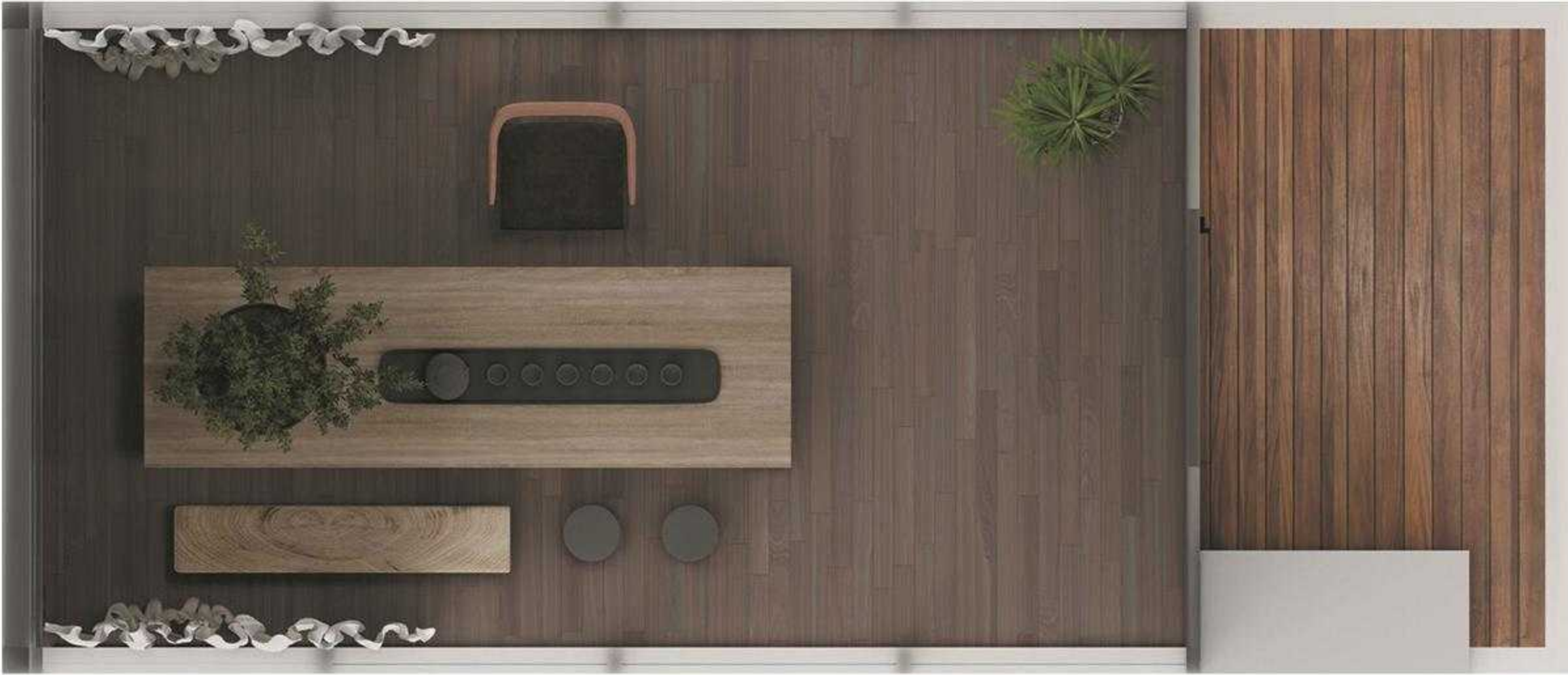


Total construction area: 36m²



- Double layer tempered insulated LOW-E glass
- Fluorocarbon painted aluminum panel exterior wall
- Waterproof mortar backfilling and reinforcement
- Reinforced solid wood Laminate Flooring
- Wet dry separation bathroom
- With brand electrical facilities





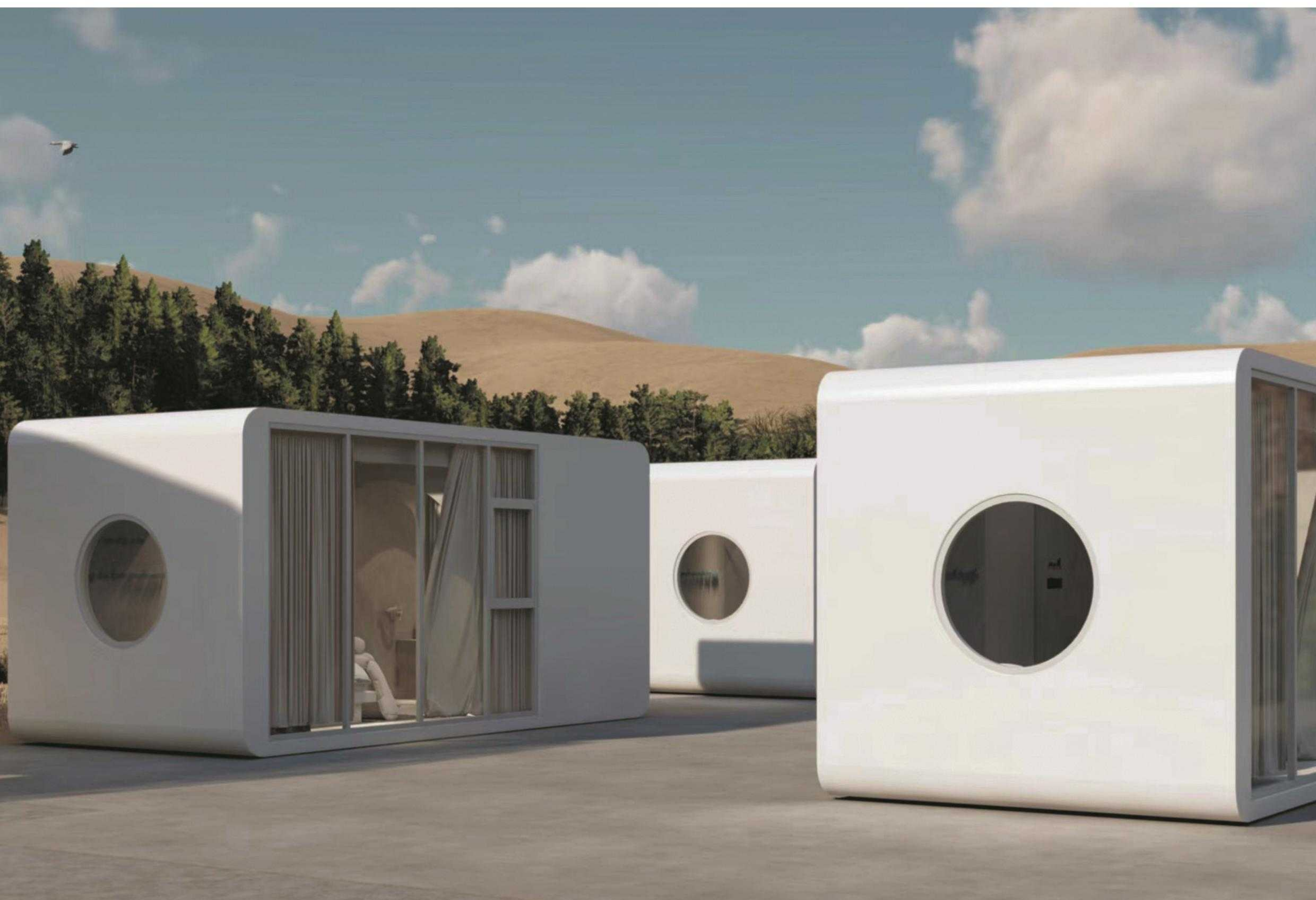
Total construction area: 21m²
Size: 3m*7m*3m

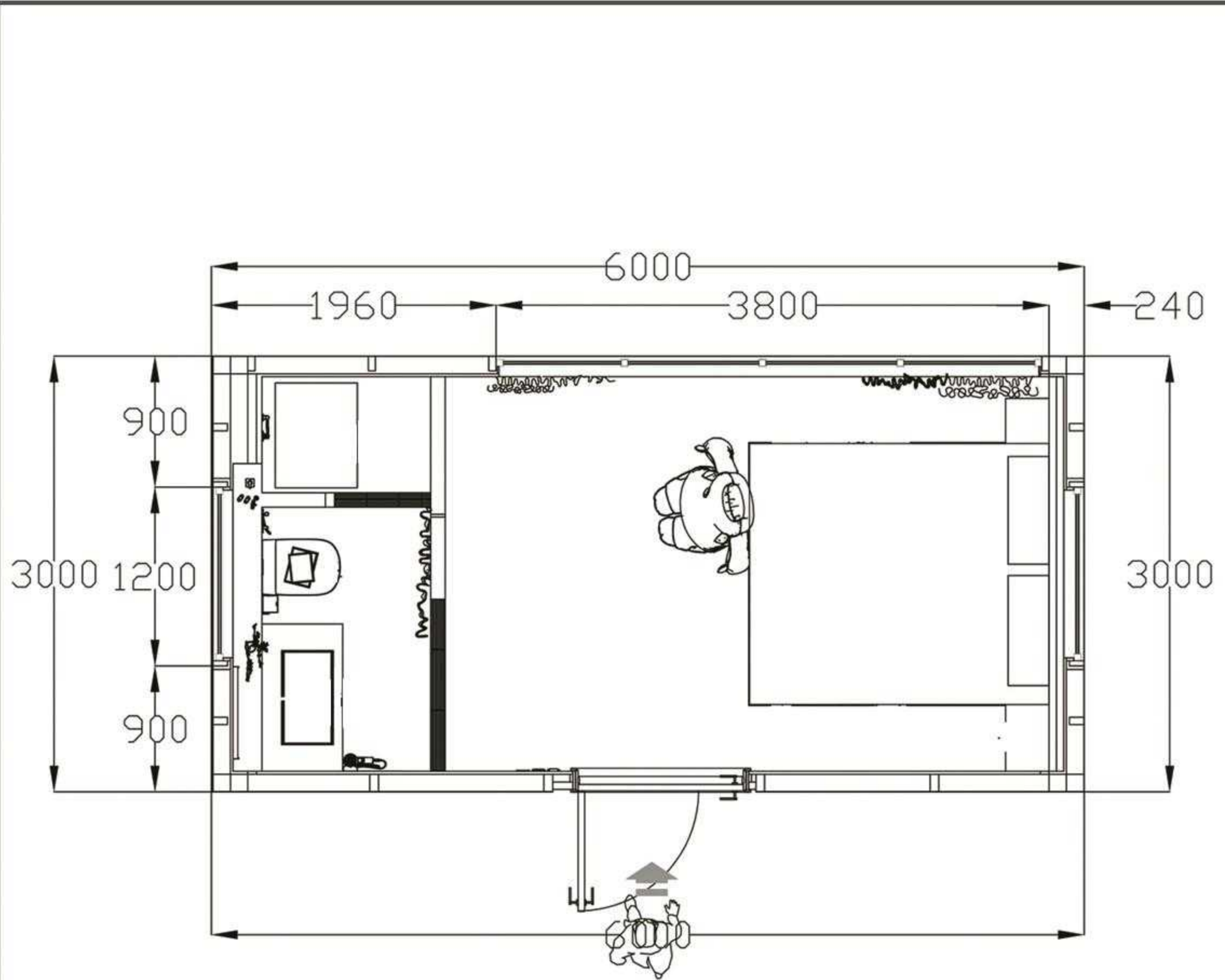


- Double layer tempered insulated LOW-E glass
- Fluorocarbon painted aluminum panel exterior wall
- Waterproof mortar backfilling and reinforcement
- Reinforced solid wood Laminate Flooring



BOX07



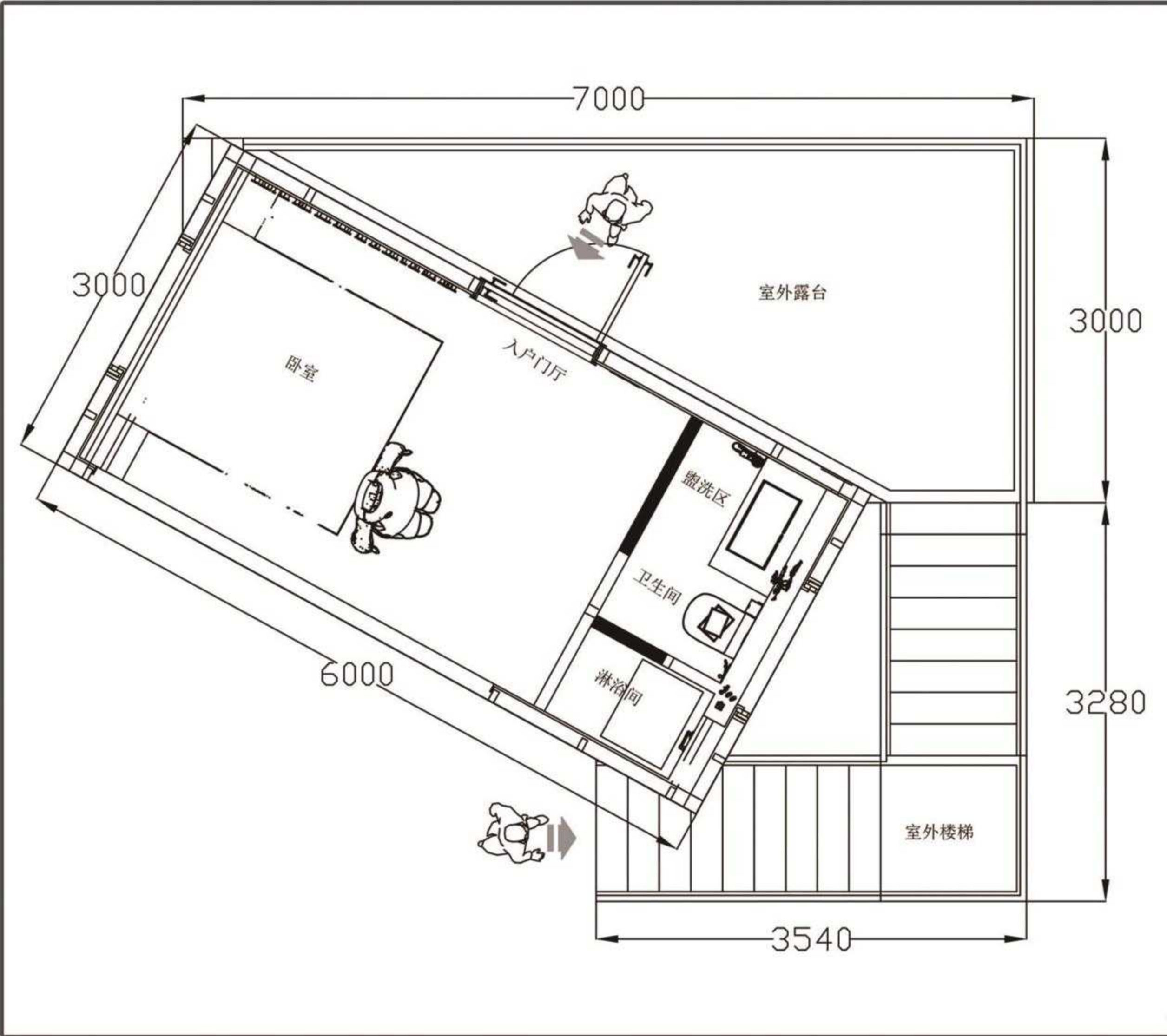


Total construction area: 18m²
Size: 3m*6m*3m



- Double layer tempered insulated LOW-E glass
- Fluorocarbon painted aluminum panel exterior wall
- Waterproof mortar backfilling and reinforcement
- Reinforced solid wood Laminate Flooring
- Wet dry separation bathroom
- With brand electrical facilities

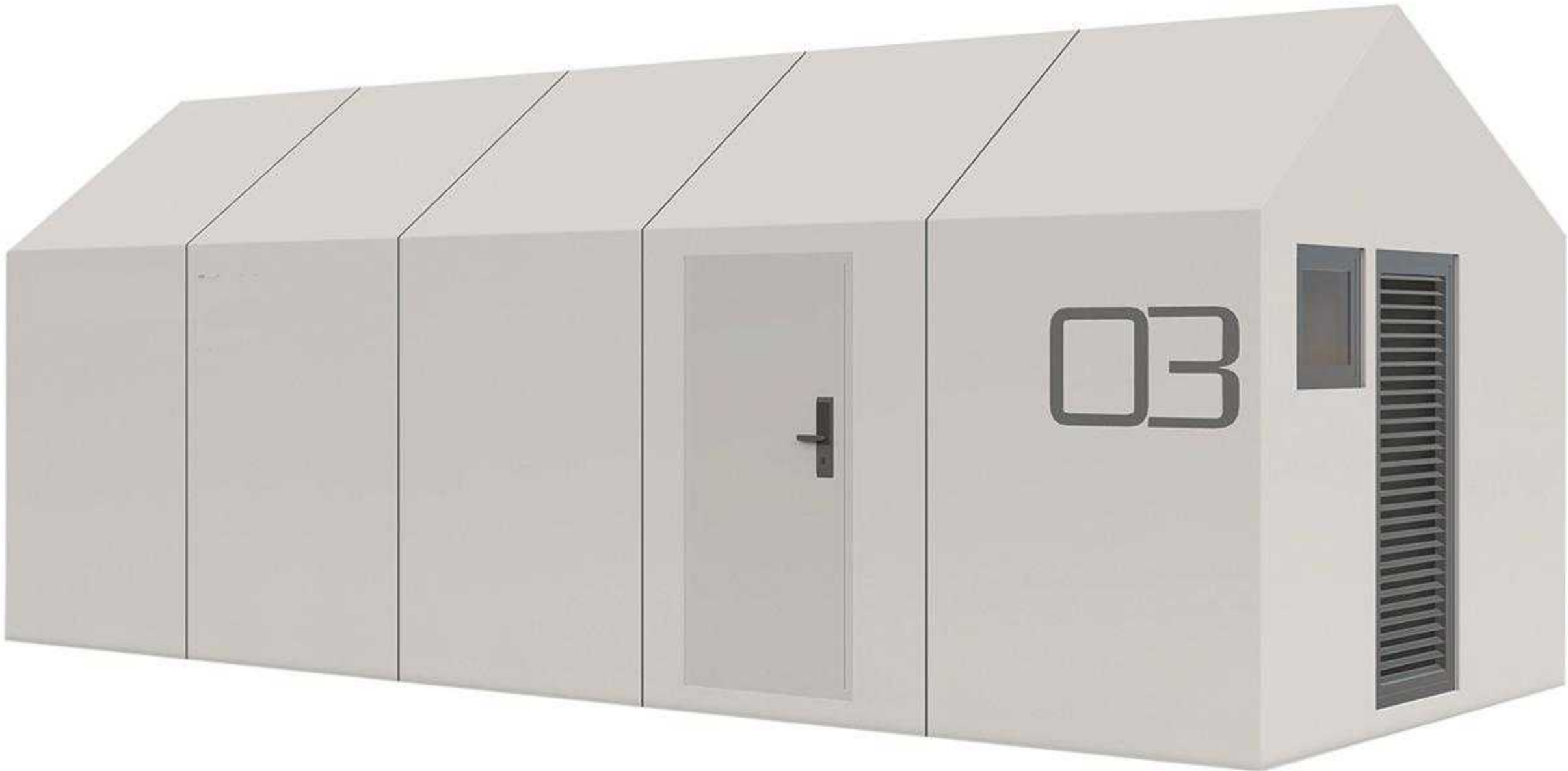


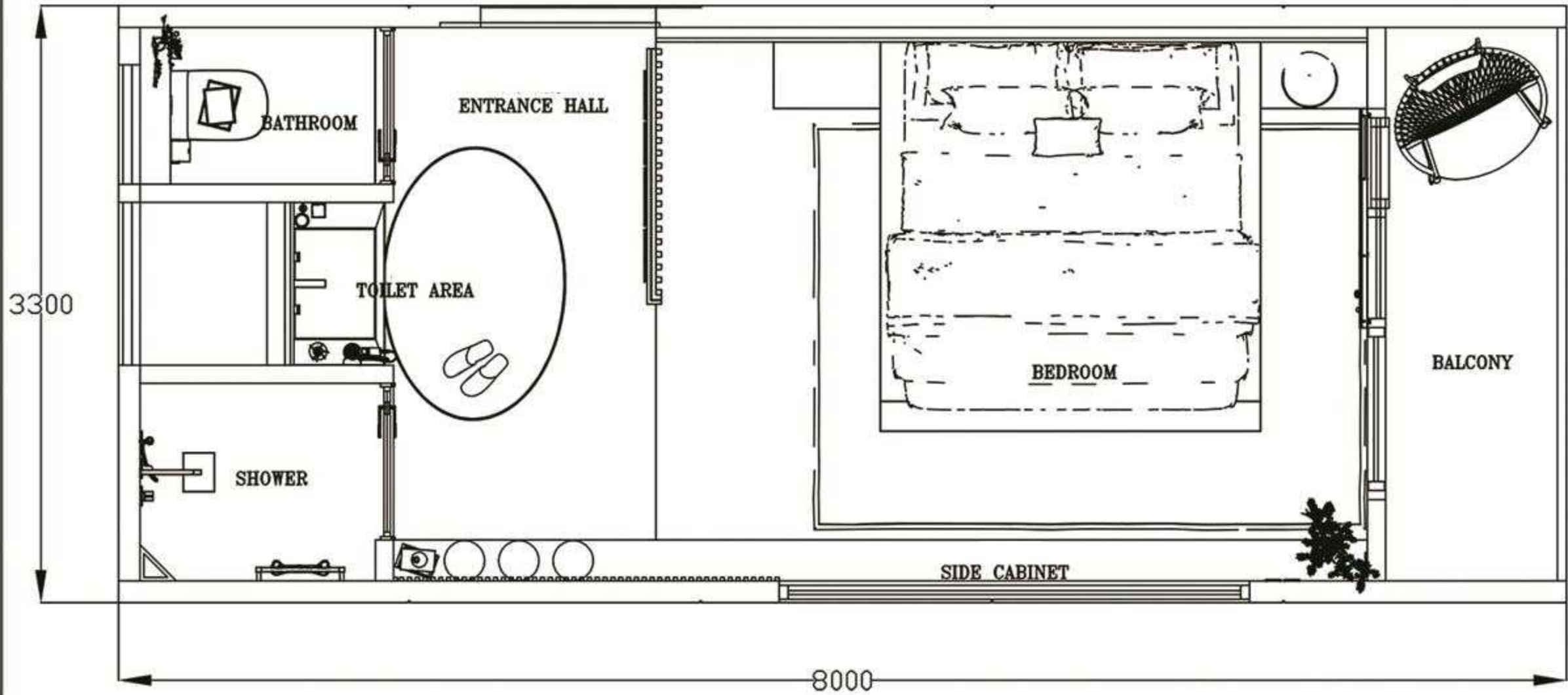


Total construction area: 39m²



- Double layer tempered insulated LOW-E glass
- Fluorocarbon painted aluminum panel exterior wall
- Waterproof mortar backfilling and reinforcement
- Reinforced solid wood Laminate Flooring
- Wet dry separation bathroom
- With brand electrical facilities



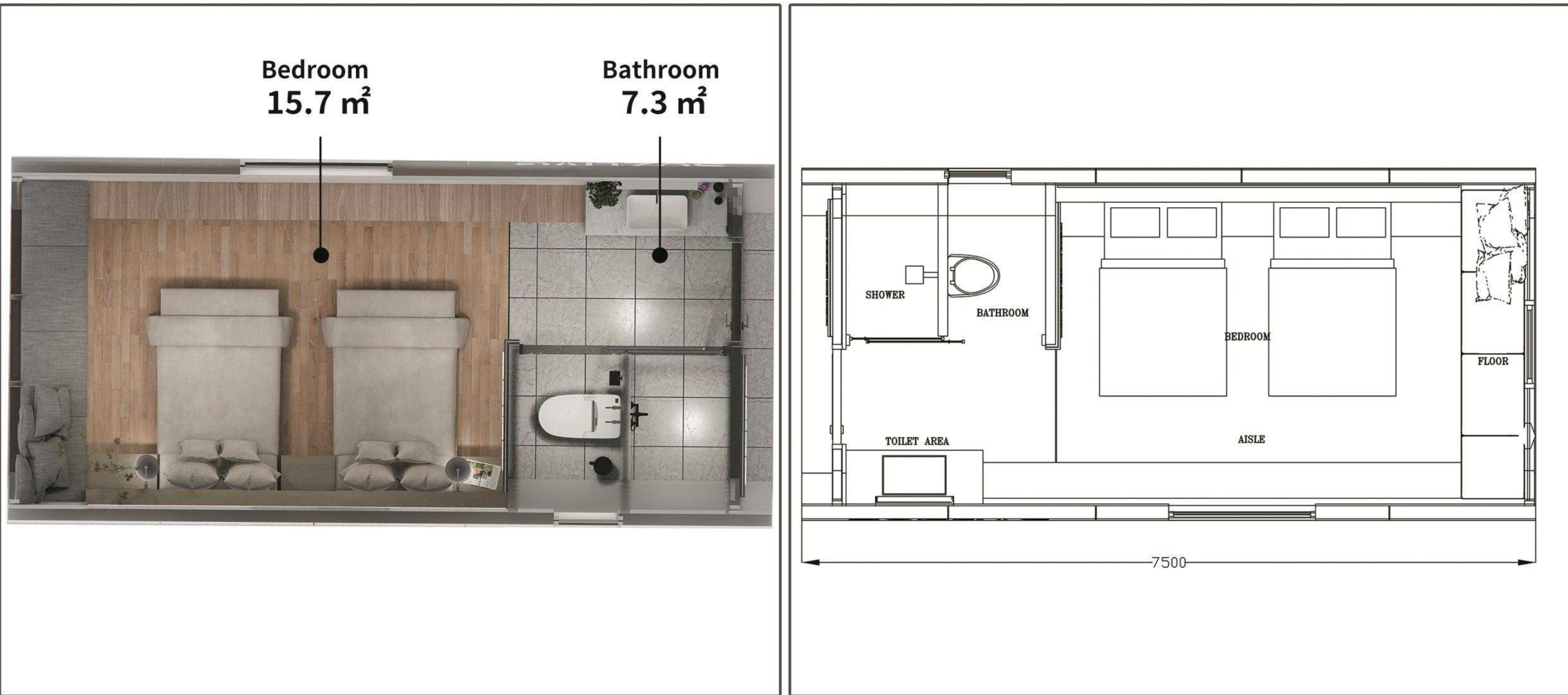


Total area: 26.4m²



- Double layer tempered insulated LOW-E glass
- Fluorocarbon painted aluminum panel exterior wall
- Waterproof mortar backfilling and reinforcement
- Reinforced solid wood Laminate Flooring
- Wet dry separation bathroom
- With brand electrical facilities





Total area: 27m²



- Double layer tempered insulated LOW-E glass
- Fluorocarbon painted aluminum panel exterior wall
- Waterproof mortar backfilling and reinforcement
- Reinforced solid wood Laminate Flooring
- Wet dry separation bathroom
- With brand electrical facilities



